

Age and Source Verified Program Compliant Tags

This document is intended to help producers better understand how Age and Source Verified (ASV) cattle are identified. It can be a valuable resource to help feeder cattle buyers and feedlot processing crews recognize cattle that have been enrolled in an ASV program. These tags should not be removed because doing so could render those animals ineligible for the ASV program they are enrolled in. In addition to the programs and tags listed in this document, there may be other programs that approve ASV cattle and use different tags from those shown here. Listing these USDA approved programs should not be considered an endorsement of these companies or cattle approved by these companies. U.S. Premium Beef will publish color updates to this document on its web page at www.uspremiumbeef.com along with other requirements for cattle to receive USPB's age and source verified premium at harvest. Please call our office at **866-877-2525** with specific questions about how to qualify and market ASV cattle through USPB.



Program Name:	ABS Verified Beef
Claims:	Age and Source Verified
Requirements:	On-site evaluation
Feeder Listing:	Feeder fax available
Tag Color:	Yellow or white
Contact:	303-840-7861



Program Name:	Ag Info Link
Claims:	Age and Source Verified
Requirements:	On-site evaluation Cattle must have an EID tag but having an EID tag does not mean an animal is approved by Ag Info Link.
Feeder Listing:	www.aginfoLink.com
Tag Color:	One of the yellow or white EID tags shown.
Contact:	800-287-8787



Program Name:	Angus Source®
Claims:	Age, Source and Genetics Verified
Requirements:	Producer must pass off-site evaluation Cattle must be sired by a registered Black Angus bull; EID tag is optional.
Feeder Listing:	www.angusSource.com
Tag Color:	White
Contact:	816-383-5100



Program Name:	Arkansas Department of Ag
Claims:	Age and Source Verified
Requirements:	On-site evaluation
Tag Color:	Visual tag: White
	EID tag: Yellow
Contact:	501-907-2400



Program Name:	Beef Verification Solution
Claims:	Age and Source Verified
Requirements:	On-site evaluation; cattle must have an EID tag from any manufacturer but that does not mean an animal is age and source verified. Visual tag is optional.
Feeder Listing:	www.agsolusa.com/bvs/CattleListing.htm
Contact:	785-587-6141



Program Name:	MICRO PVP/CattleLog™
Claims:	Age and Source Verified
Requirements:	Off-site evaluation Cattle must have an EID tag but having an EID tag does not mean an animal is approved by Micro PVP/CattleLog.
Feeder Listing:	www.cattlelog.com
Tag Color:	One of the yellow or white EID tags shown is mandatory. White panel tag is optional.
Contact:	866-239-2665



Program Name:	Charolais Advantage™
Claims:	Age and Source Verified
Requirements:	Off-site evaluation; Charolais genetics
Feeder Listing:	www.cattlelisting.net
Tag Color:	Blue
Contact:	816-464-5977



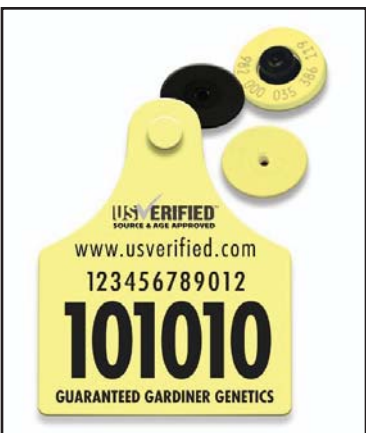
Program Name:	Farmers & Ranchers Livestock Comm. Co.
Claims:	Age and Source Verified
Requirements:	Off-site evaluation
Feeder Listing:	www.farmersandrancherslivestock.com
Tag Information:	EID tag is mandatory. GAM EID is shown; but having an EID tag does not mean an animal is approved. Yellow
Contact:	785-825-0211



Program Name:	Global Animal Management (Tri-Merit)
Claims:	Age and Source Verified
Requirements:	Off-site evaluation
Feeder Listing:	www.tri-merit.com
Tag:	EID tag is mandatory (several EID manufacturers allowed); GAM EID is shown; but having an EID tag does not mean an animal is approved by Tri-Merit. Visual tag is optional.
Contact:	800-235-9824



Program Name:	IMI Global/US Verified™
Claims:	Age and Source Verified
Requirements:	Off-site evaluation
Feeder Listing:	www.cattlelisting.com
Tag Color:	Visual tag: Light blue
	EID tag: Yellow
Contact:	303-895-3002



Program Name:	IMI Global/US Verified/Guaranteed Gardiner Angus Genetics
Claims:	Age and Source Verified
Requirements:	Off-site evaluation; Sired by GAR bulls
Feeder Listing:	www.cattlelisting.com
Tag Color:	Visual tag: Yellow
	EID tag: Yellow
Contact:	785-354-8596



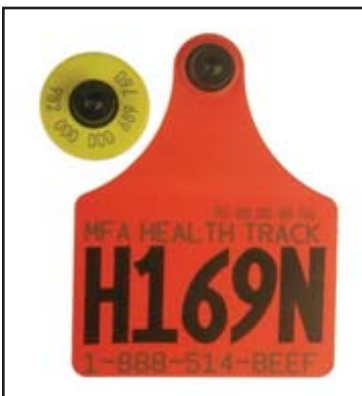
Program Name:	IMI Global/US Verified; Origen
Claims:	Age and Source Verified
Requirements:	Off-site evaluation
Feeder Listing:	www.cattlelisting.com
Tag Color:	Yellow; The two part eartag shown at left fits together to form the IMI Global/US Verified tag
Contact:	303-895-3002



Program Name:	Joplin Regional Stockyards
Claims:	Age and Source Verified
Requirements:	On-site evaluation
Feeder Listing:	www.joplinstockyards.com
Tag Color:	Yellow
Contact:	417-548-2333



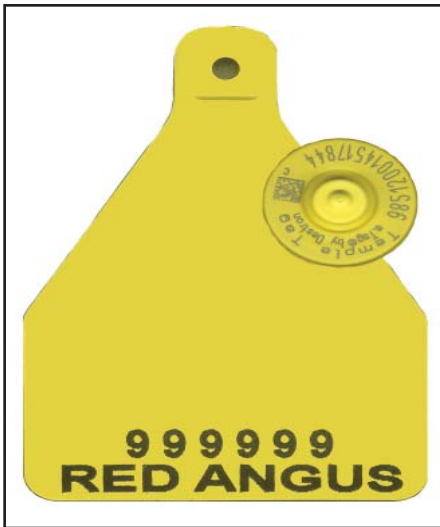
Program Name:	Merial SureHealth™
Claims:	Age and Source Verified
Requirements:	Off-site evaluation Health and preconditioning protocols Green visual tag/EID must be present to be ASV; Surehealth with metal clip only are not ASV
Feeder Listing:	www.surehealth.com
Tag Color:	Visual tag: Green
	EID tag: Yellow or white
Contact:	678-638-3524



Program Name:	MFA Health Track
Claims:	Age and Source Verified
Requirements:	On-site evaluation Calves must be preconditioned, weaned for 45 days prior to sale date, and fed MFA feed for at least 14 days after weaning
Feeder Listing:	www.mfahealthtrack.net
Tag Color:	Visual tag: Red; EID tag: Yellow or white
Contact:	888-514-2333; 573-864-2270



Program Name:	Pfizer SelectVAC
Claims:	Age and Source Verified
Requirements:	On-site evaluation Health and preconditioning protocols Only Select Vac calves with white visual tag shown at left are ASV
Feeder Listing:	www.selectvac.com
Tag Color:	Visual tag: White; EID tag: Yellow
Contact:	800-877-8857



Program Name:	Red Angus Feeder Calf Certification Program
Claims:	Age, Source and Genetics Verified
Requirements:	Off-site evaluation; traceability to at least 50% Red Angus bloodlines
Feeder Listing:	Feeder fax will be sent by request
Tag Color:	Yellow
Contact:	940-387-3502



Program Name:	Samson LLC
Claims:	Age and Source Verified
Requirements:	On-site evaluation for feedyards. Off-site evaluation for ranches.
Tag Color:	Visual tag: Yellow EID tag is optional: White
Contact:	877-726-7661



Program Name:	Sterling Solutions
Claims:	Age and Source Verified
Requirements:	On-site evaluation
Tag Color:	Any color and any tag manufacturer
Contact:	541-473-3266



Program Name:	Superior Verified
Claims:	Age and Source Verified
Requirements:	Off-site evaluation
Feeder listing:	www.superiorlivestock.com
Tag Color:	Pink
Contact:	866-266-2403



Program Name:	101 Livestock Market
Claims:	Age and Source Verified
Requirements:	On-site evaluation
Feeder Listing:	www.101livestock.com
Tag Color:	Yellow-steers
	White-heifers
Contact:	831-726-3220



Program Name:	SimChoice
Claims:	Age and Source Verified
Requirements:	Off-site evaluation; tags may not guarantee age verification; Simmental genetics
Feeder Listing:	www.cattlelog.com
Tag Color:	Visual tag: Green
	EID tag: White
Contact:	406-587-4531



Program Name:	Per4mance Verified
Claims:	Age and Source Verified
Requirements:	Off-site evaluation
Feeder Listing:	www.cattlelog.com
Tag Color:	White tag. Producers must also use a Micro PVP/CattleLog™ EID tag to be enrolled in the Per4mance Verified program.
Contact:	970-587-4626



Program Name:	Colorado Cattlemen's Verified Program
Claims:	Age and Source Verified
Requirements:	Off-site evaluation
Tag Color:	Orange dangle tag with yellow EID tag
Contact:	303-431-6422



Program Name:	American Maine Anjou Association
Claims:	Age and Source Verified
Requirements:	Off-site evaluation; Maine Anjou genetics
Feeder Listing:	www.cattlelisting.com
Tag Color:	Yellow
Contact:	816-431-9950



Program Name:	Verified Beef
Claims:	Age and Source Verified
Requirements:	Off-site evaluation
Feeder Listing:	Producer list available
Tag Color:	Yellow; EID tag is mandatory; Visual tag is optional.
Contact:	406-922-2333



Program Name:	International Brangus Breeders Association/OptimaxX
Claims:	Age, Source and Genetics Verified
Requirements:	Off-site evaluation
Tag Color:	Yellow; EID or visual tag
Contact:	210-696-8231



Program Name:	Gateway Program
Claims:	Age and Source Verified
Requirements:	Producer must pass off-site evaluation. EID tag is optional.
Feeder Listing:	www.angussource.com
Tag Color:	Yellow dangle tag with white (not shown) EID tag
Contact:	816-383-5100



Program Name:	TechniTrack, LLC
Claims:	Age and Source Verified
Requirements:	Producer must pass on-site evaluation.
Tag Color:	Any tamper proof EID or dangle tag
Contact:	480-751-8003

This document was adapted from a similar document originally developed by IMI Global.